

# BEP

LEADING ELECTRICAL DESIGN

## Product Update

### 12 & 24V Stainless Steel Push Button Switches & Buzzers with LED Ring



Manufactured using 304 stainless steel, these through panel mount switches are IP67 rated when installed and ideal for switching lighting or installing into custom switch & dash panels. The light rings may be wired to show power to a system or switch back lighting. The range also includes matching stainless steel warning buzzers with LED light rings (red LED activates with buzzer).

- Momentary and latched actuation options available
- Blue and red circuit status indication LED options
- 304 Stainless Steel components, silver alloy contacts
- Maximum switch current rating 5amps
- IP67 environmental protection for switches
- IP50 environmental protection for buzzers
- Buzzer sound intensity 80dB (pulsating tone)

Item # 80-511-0001-01 Latching ON/OFF Red 12V LED

Item # 80-511-0002-01 Momentary (ON)/OFF Red 12V LED

Item # 80-511-0003-01 Latching ON/OFF Blue 12V LED

Item # 80-511-0004-01 Momentary (ON)/OFF Blue 12V LED

Item # 80-511-0005-01 Latching ON/OFF Red 24V LED

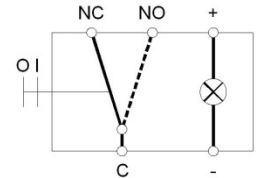
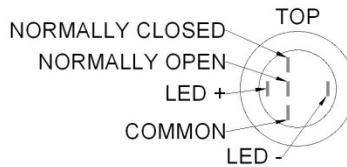
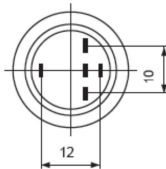
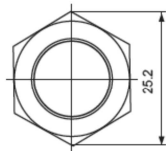
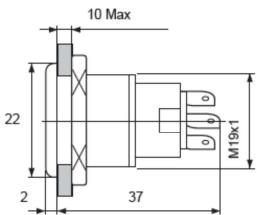
Item # 80-511-0006-01 Momentary (ON)/OFF Red 24V LED

Item # 80-511-0007-01 Latching ON/OFF Blue 24V LED

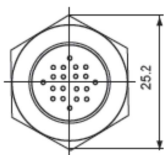
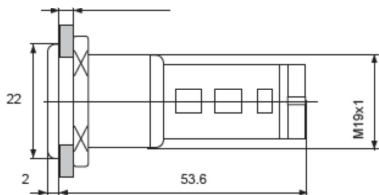
Item # 80-511-0008-01 Momentary (ON)/OFF Blue 24V LED

Item # 80-511-0009-01 Buzzer Red 12V LED

Item # 80-511-0010-01 Buzzer Red 24V LED



All dimensions in mm



All dimensions in mm

**MARINCO**

**MASTERVOLT**  
THE POWER TO BE INDEPENDENT

**BEP**  
LEADING ELECTRICAL DESIGN

BEP Marine Ltd, 55 Paul Matthews Road, Albany, Auckland 0632 • PO Box 101 739 NSMC • Auckland, New Zealand

ph: +64 9 415 7261 • fax: +64 9 415 9327 • email: enquiries@bepmarine.com • website: www.bepmarine.com